

**FOR SALE**

# 5.14 Acres Development Land Blarney, Co. Cork



## **Residential Development Opportunity** **5.14 Acres / 2.08 Ha Approx.**

### **Investment Highlights**

- The lands comprise 5.14 Acres / 2.08 Ha of prime development land
- Strategically located in Blarney village with good access from the R617
- Zoned for residential development in the Blarney Macroom Local Area Plan 2017
- As of 2019, Blarney forms part of Cork City Council and will be governed by the Cork City Development Plan 2022 – 2028 once published
- Excellent access to local services, Cork city and the N20 to Limerick
- For sale by way of Private Treaty in 1 Lot

### **Contact**

Peter O’Flynn  
Email: [peter.oflynn@cushwake.ie](mailto:peter.oflynn@cushwake.ie)

Siobhán Young  
Email: [siobhan.young@cushwake.ie](mailto:siobhan.young@cushwake.ie)

Cushman & Wakefield  
No. 6 Lapp’s Quay  
Cork  
Ireland  
Tel: +353 (0)21 427 5454

# 5.14 Acres Development Land, Blarney, Co. Cork



## Strategically located 5.14 Acre / 2.08 Ha residential development site



Zoned for residential development in the Blarney-Macroom LAP



Access to mains services & a wide variety of education, retail & medical amenities



5.14 Acre / 2.08 Ha site set in grass with direct access from the R617



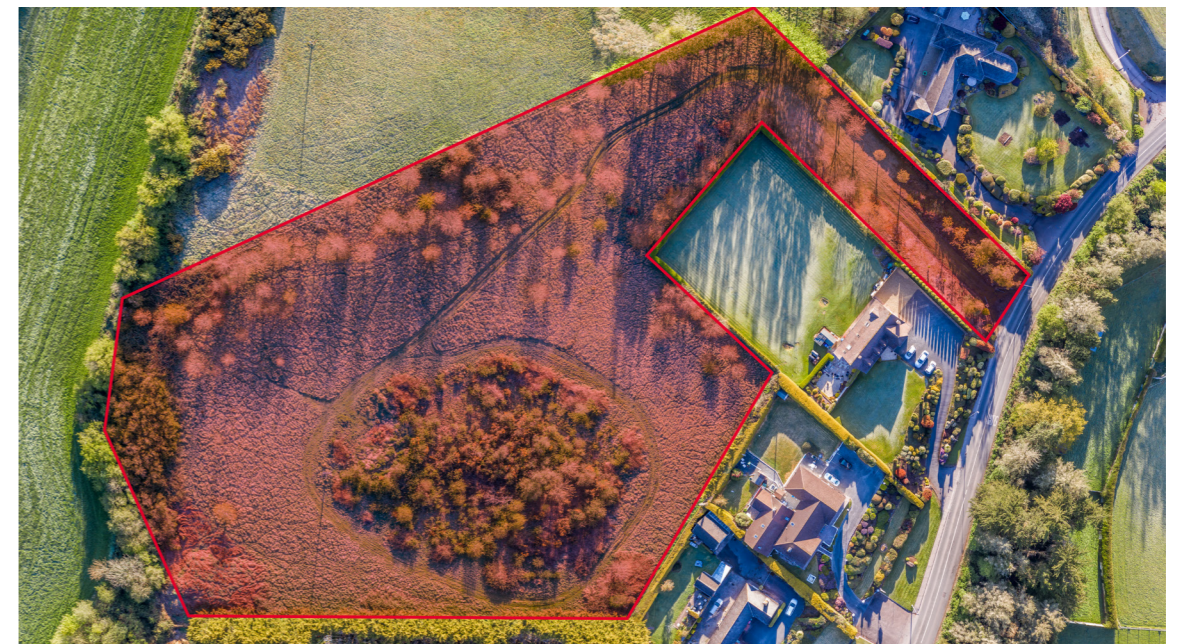
Blarney is home to Blarney Castle, Blarney Woollen Mills & Blarney Business Park



Prime suburban location close to Cork city centre, the M8 & N20 Limerick Road



The entire is held by way of a freehold title





## For Sale

By Private Treaty

## Guide Price & Viewing

Available upon request

## Title

Freehold

## Services

Access to mains services

## BER details

Exempt

## Contact

Peter O'Flynn  
peter.oflynn@cushwake.ie  
Tel: +353 (0)86 250 7944

Siobhán Young  
siobhan.young@cushwake.ie  
Tel: +353 (0)87 185 4274



Cushman & Wakefield  
No. 6 Lapp's Quay  
Cork  
Ireland  
Tel: +353 (0)21 427 5454  
Email: cork@cushwake.ie

[cushmanwakefield.ie](https://www.cushmanwakefield.ie)

A full copy of our general brochure conditions can be viewed on our website at <https://property.cushwake.ie/disclaimer>, or can be requested from your local Cushman & Wakefield office. We strongly recommend that you familiarise yourself with these general conditions. While care has been taken to ensure that information contained in Cushman & Wakefield publications is correct at the time of publication, changes in circumstances after the time of publication may impact on the accuracy of this information. PSRA Registration Number: 002607.